

ENGLISH IN THE USA

An American experience at TLA



Welcome to TLA Fort Lauderdale



FORT LAUDERDALE - AN EXCELLENT CHOICE:

- A major English-speaking city in South Florida
- One of the fastest growing centers for business and international trade
- Home to multinational companies and four universities in the metropolitan area
- A friendly and safe atmosphere
- A vibrant and wealthy community, clean air and waters, with young median age residents and an average household income well above the national American average
- Recognized as one of America's top 15 "Hot Spots" for job growth. The city is now known as The Capital of The Internet Coast
- Rated one of the top ten best downtowns in the USA by Liveability.com
- Known as the "Venice of America" with 85 miles of navigable waterways and canals, the city is the yachting capital of America

FLORIDA - ENDLESS SUMMER:

- Sub-tropical climate, ideal for enjoying the beach almost every day of the year
- December - May (Winter) average temperature of 75 F/23 C
- June - November (Summer) average temperature of 85 F/29 C
- Known as the "Sunshine State" thanks to its 310 days of sunshine per year
- The State has 900 miles of beautiful palm lined beaches
- Offers a variety of natural attractions, such as The Keys, a long chain of islands off the southern coast, over 30,000 lakes and the Everglades National Park
- Natural habitat for thousands of tropical plants and animals and is still home to Native American tribes
- Fly to the Caribbean, North and South America, Europe and the Bahamian Islands, which are only thirty minutes away by airplane from the Fort Lauderdale/ Hollywood International Airport



Enrollment and Arrival – An American Experience

ENROLLMENT

- Request the application form via email or mail and read the enrollment conditions. Fill out and sign an application form and an enrollment terms and conditions agreement that will be provided to you by the admissions office. Once your application is approved, you will receive an acceptance letter and an invoice.
- TLA is authorized by the US Administration to accept non-immigrant foreign students. Students who wish to enroll in a course of more than 18 clock hours/week must apply for a student visa. TLA will issue an I-20 form that you will need to request an appointment at the US Consulate in your country. The I-20 Form is issued after the required information and financial documentation is submitted to TLA.



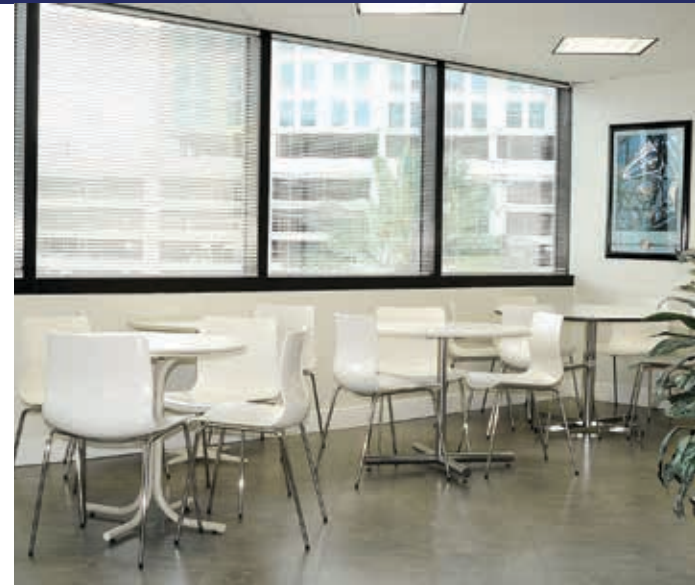
ARRIVAL

- Airport pick up and drop off can be arranged by the school. Please request it at the time of enrollment.
- Car rental information can be found at the school or nearby rental agencies. Bus schedules and information about bicycle rentals are available.
- Orientation and distribution of a Student Handbook takes place every Monday before testing and placement in order to assist you in adjusting to life in the USA and to inform you about activities and procedures at TLA.
- Students should have medical insurance or purchase insurance via TLA. TLA will not be responsible for medical bills incurred by students.

EXCITING THINGS TO DO IN FLORIDA

- **Beaches:** open to the public, free showers, bathrooms and picnic areas
- **Sports:** Paddleboard, jet-ski, parasail, jetpack, snorkel, scuba, sail, surf, kayak, canoe, horseback ride, cycle and swim. Play soccer, tennis and basketball at public parks.
- **Golf:** 40 golf courses around town
- **Boat Tours:** sightseeing cruises, water taxis, gondolas, pontoon cruise
- **The Everglades:** airboat rides and alligator shows
- **Shopping:** Fort Lauderdale Galleria Mall, Sawgrass Mills, Miami, Aventura Mall, Miami Bal Harbour and Boca Raton Town Center
- **Dining:** Top-rated restaurants
- **Museums:** Fort Lauderdale Museum of Art, The Dezer Car collection Museum, The Wolfsonian Museum Miami, Riverwalk Arts & Entertainment district, Fishing Hall of Fame, Swimming Hall of Fame, Young At Art Museum
- **Indian Reservations:** Micosukee and Seminole Reservations
- **Professional Sports:** Marlins baseball, Heat basketball, Dolphins football and Florida Panthers hockey
- **Live Music:** BB&T Center, Hard Rock Live, Live Music Bars and more
- **Animal parks:** Parrot Jungle, Butterfly World, Miami Se aquarium, Swamp Safari, Flamingo Gardens
- **Palm Beach:** City Center entertainment district, The Flagler Museum
- **Miami:** Miami South Beach, Miami Midtown and Wynwood District, Miami Brickell Avenue district
- **Key West:** snorkeling, sailing and Hemingway's house
- **Orlando:** Disneyworld, Islands of Adventure, Universal Studios, Seaworld, MGM Studios and many more parks
- **Cape Canaveral & NASA:** learn the history of the US Space program and tour the launch sites and exhibits
- **The Bahamas:** day and weekend cruises (18 and over)





Our School – Your Goals

THE SCHOOL FACILITIES

TLA occupies a large area in a modern glass front building and features:

- Modern, bright classrooms, most with natural light
- A separate Executive Suite for professionals
- Free Wi-Fi
- A media center with flat screen computers. This area also serves as an official TOEFL, TOEIC and Cambridge exam testing center
- A reference library with software and books as well as lifestyle and business magazines
- Lounge with sofas and self-study areas
- A coffee lounge with snack and beverage vending machines, an espresso machine, microwaves, cafe-style seating and a free local telephone line
- Free coffee, tea and purified water available throughout the day
- Easily accessible administrative offices

Our school is located in the Museum Plaza in Fort Lauderdale's lively downtown area.

- Next to the Museum of Art and Public Library
- Near several universities and restaurants
- Close to the Las Olas shopping and entertainment district
- Across from a large city garden with benches
- Minutes from the Central Bus Terminal
- 10 minutes by bus to the beach

STUDENTS AND CLASSES

- Our student body is made of professionals, business executives, university students, families and those who may benefit from English learning.
- Our classes are small (maximum 12 students in GE classes) and students are placed in levels corresponding to their placement test score.
- All courses are multinational and English is always the means of communication with the teachers and with other students. An ENGLISH ONLY policy is encouraged within the school facilities.

LEARN EFFECTIVELY

- Our teachers and counselors will check your progress throughout the course to ensure you are learning effectively.
- Careful appraisal and initial testing ensures that you are placed in the right level.
- Regular counseling with the Director of Language Programs will monitor your progress throughout your course.
- Each class has a weekly review of course material. You will take a test to check your progress.
- Upon completion of your course you will receive a Certificate of Completion, provided you maintained satisfactory attendance.
- The teachers and the administration are at your disposal to give you advice and practical guidance throughout your stay.

Whichever course you choose, our close attention to quality and personal service will greatly help you progress in your studies.

Accreditations, Memberships, Affiliations and Awards

TLA IS ACCREDITED BY:



TLA is accredited by ACCET, the accrediting council for continuing education and training. ACCET is listed by the US Department of Education as a nationally recognized accrediting agency.

ACCET, 1722 NSt NW Washington, DC 20036 ☎ 202-955-1118



ENGLISH USA formally AAIEP - American Association of Intensive English Programs promotes ethical and professional standards for Intensive English Language Programs.



IALC, The International Association of Language Centres, is a network of high-quality, independent language schools teaching their native language to international students. IALC member schools are selected based on quality management, from the employment of qualified teachers and provision of a structured curriculum, to accurate publicity and full student support outside classes. TLA has been an IALC member since 2008.

TLA IS A VOTING MEMBER OF:



ALTO - Association of Language Travel Organizations encourages "in country" learning of foreign languages amongst people throughout the world and promotes professionalism and high standards of service.



OFFICIAL TEST CENTER:

ETS TOEFL

A Certified Test Administration Site (CTAS)



ETS AUTHORIZED TEST CENTER

TOEIC

A Certified Test Administration Site (CTAS)



CAMBRIDGE ESOL

Authorized Test Center



NOMINATED FOR STAR AWARD ENGLISH LANGUAGE SCHOOL NORTH AMERICA –

2008

2012

2013

2014



Shortlisted

English Language School - North America 2014



BILDUNGSURLAUB

Recognized Programs



Which Course is for you?

Level	Current English Language Level	CEFR	TOEFL	CAM	TOEIC	IELTS	Which course is for me?
7 Proficiency	You can use a range of language close to that of your own language. You have no problem understanding or communicating. You now wish to extend your vocabulary and explore the nuances of idiomatic English.	C2	101-120	CPE	876-990	7.5+	General English - C levels One-to-One English Executive/ESP TOEFL, TOEIC, IELTS University Preparation
6 Advanced	You can express yourself clearly and effectively. You have a sound grasp of major tenses and grammatical structures. You read widely and can follow the majority of what is heard on TV, radio and film.	C1	91-100	CAE	731-875	6.5-7.0	General English - C levels One-to-One English Executive/ESP TOEFL, TOEIC, IELTS Cambridge Exam Preparation (CPE) University Preparation
5 Upper Intermediate	You can communicate effectively in most situations, discussing and expressing opinions on a wide range of topics. You will continue to broaden your vocabulary to become more fluent and accurate.	B2	81-90	FCE	591-730	5.0-6.0	General English - B2 levels One-to-One English Executive/ESP TOEFL, TOEIC, IELTS Cambridge Exam Preparation (CAE) University Preparation
4 Intermediate - 2	You are somewhat comfortable speaking English and understand much of what you read and hear. You have a reasonable vocabulary and can survive well in most situations. You now need to become more fluent and accurate, use more complex structures and sophisticated vocabulary.	B1	71-80	N/A	501-590	3.5-4.5	General English - B1 levels One-to-One English Executive/ESP TOEFL, TOEIC, IELTS Cambridge Exam Preparation (FCE) University Preparation
3 Intermediate - 1	You can speak with limited proficiency. Able to maintain simple face-to-face conversation on familiar topics.	A3	60-70	N/A	301-500	3.5-4.5	General English - A levels One-to-One English
2 Pre-Intermediate	You can communicate well in everyday social and travel situations and understand some of what is said. You are familiar with basic grammar but need to develop this further. You need to build your vocabulary and listening skills.	A2	N/A	N/A	200-300	3.0	General English - A levels One-to-One English
1 Elementary	You have a basic vocabulary and can communicate on a simple level. You can survive in everyday situations such as shopping, greeting and travelling. You make a lot of mistakes but people can understand you.	A1	N/A	N/A	N/A	2.0-2.5	General English - A levels One-to-One English

General English



GENERAL ENGLISH GEA1

- Practice the four skills of English, speaking, listening, reading and writing using real life situations and materials
- Improve your level effectively with clear goals and objectives
- Get introduced to new vocabulary, idioms, pronunciation technique and error correction

Levels: A1 Beginner to C2 Advanced

Hours per week: 17

GENERAL ENGLISH SEMI INTENSIVE GEA 2

- Practice the four skills, speaking, listening, reading and writing using real life situations and materials
- Improve your level effectively with clear goals and objectives built on the European Framework
- Get introduced to new vocabulary, idioms, pronunciation technique and error correction
- Receive additional afternoon classes

Levels: A1 Beginner to C2 Advanced

Hours per week: 19

PLATINUM GENERAL ENGLISH MINI GROUP MAXIMIZE YOUR CHANCES TO CONVERSE

- Meet other motivated students in a small group
- Receive individual attention, guidance and feedback from your teachers
- Get additional error correction and pronunciation critique
- Achieve more confidence, by interacting within a small group

Participants: maximum 5

Levels: A1 Beginner to C2 Advanced

Hours per week: 17

GEB WITH ELECTIVE OPTION

- Maximize your ability to use everyday English
- Progress more rapidly by attending an intensive course
- Enrich your fluency while nurturing your confidence and conversation skills!
- Practice the four skills, speaking, listening, reading and writing using real life situations and materials

- Improve your level quickly and effectively with clear goals and objectives built on the European Framework
- Get introduced to new vocabulary, idioms and pronunciation technique and error correction

CHOOSE AFTERNOON ELECTIVES:

- Writing
- Accent Reduction/Pronunciation
- English for Business (B1 level required)
- TOEFL (B1 level required)
- Conversation

Levels: A1 Beginner to C2 Advanced

Hours per week: 25

General English minimum age: 16

General English course begins: every Monday



General English

GENERAL ENGLISH PLUS PRIVATE LESSONS COMBINE GROUP LESSONS WITH PRIVATE LESSONS FOR ADDITIONAL SUPPORT AND GUIDANCE ADAPTED TO YOUR RATE OF PROGRESS

- GEC: Add 5 Private lessons each week
- GED: Add 10 Private lessons each week

Levels: A1 Beginner to C2 Advanced

ENGLISH COURSE PLUS PRACTICUM

ENGLISH PRACTICUM - Maximum 12 weeks (4-6 weeks of English course + 6 - 8 weeks of volunteer activity in a business environment)

- Attend General English course
- Write a CV / résumé under a teacher's supervision and polish your conversational skills
- Complement your English-language training by observing the US working world at an organization, social group or company
- Gain real-life practice to help you use what you learned in class!
- Meet native-speakers

Minimum age: 18

Levels: B2 Intermediate to C2 Advanced

Long Term English minimum age: 16

Long Term English course begins: every Monday

PRIVATE TUTORING (1 TO 1)

GENERAL ENGLISH PRIVATE LESSON

- Focus on everyday English tailored to your specific needs



Test Preparation

MINIMUM 4 WEEKS

TOEFL

- Improve all areas of your English while learning about exam skills and strategies
- Set goals, receive assessment and track your progress through homework, quizzes and practice exams
- Take afternoon dedicated writing, accent reduction or additional TOEFL seminars in the TOEFL Intensive option
- Take the computer-based test at TLA
- Receive a recognized English qualification for your future admission to college or university in the USA

Levels: B1 Intermediate to C2 Advanced

Hours per week: 17 or 25

Course begins: every Monday

TOEIC

- Prepare to get the highest possible TOEIC score alongside other Intermediate to Advanced students
- Set goals, receive assessment and track your progress through homework, quizzes and practice exams
- Improve all areas of your English while learning about exam skills and strategies
- Take the TOEIC test at TLA
- Receive a recognized English qualification for your future profession.
- Provide your employer with a measure of your English proficiency success.

Levels: B1 Intermediate to C2 Advanced

Hours per week: 17

Course begins: every Monday

IELTS

- Study to take the IELTS exam with other Intermediate to Advanced students.
- Improve all areas of your English and receive extra interview practice
- Get an IELTS score to measure your level of proficiency in speaking, listening, writing and reading
- Use the IELTS qualification for your future entrance to college or university.

Levels: B1 Intermediate to C2 Advanced

Hours per week: 17

Course begins: set start dates

CAMBRIDGE FCE CAE CPE

- Get a Cambridge score to measure your level of proficiency in speaking, listening, writing and reading
- Immerse yourself in English for the purpose of taking a specific test
- Improve all areas of your English and receive extra interview practice.
- Take practice and simulation exams regularly and learn exam techniques
- Be assessed on your performance through assignments
- Improve your overall level and fluency
- Take the computer based Cambridge exam at our school

Levels: B1 Intermediate to C2 Advanced

Hours per week: 25

Minimum: 10 or 12 weeks

Course begins: set start dates

Test Preparation minimum age: 16





University Preparation

GENERAL ENGLISH PLUS TEST PREPARATION

- Work towards English proficiency in order to enter a college or university. This program is a combination of General English, writing workshops and test preparation courses (either TOEFL, IELTS, TOEIC or Cambridge)
- Take a break from your career or education to develop fluency, accuracy and appropriate uses of English
- Receive excellent guidance (including exam strategies), monitoring, feedback (including time management) and assessment throughout your course, via homework and regular progress and level tests, presentations and essay writing
- Meet with the Director of Language Programs regularly to review learning objectives and outcomes
- Gain one or more internationally recognized certificates such as TOEFL, IELTS, Cambridge or TOEIC (Test fee additional)
- Receive assistance with the admissions process to college or university (Optional -extra fee applies)

Minimum age: 16

Levels: B1 Intermediate to C2 Advanced

Hours per week: 19 / 25

Course duration: 12 weeks +

Course begins: every Monday





Executive English for Professionals



EXECUTIVE

- Learn in dedicated small classes
- Practice general business terminology, idioms and phrases
- Submit a needs analysis questionnaire in order for our teacher to plan a program that covers topics of your interest
- Establish a course plan to help you achieve your objectives
- Improve your career by making presentations, using critical thinking and problem solving, conducting negotiations and writing professional reports, emails and letters
- Gain intercultural awareness by interacting with professionals from other countries

Participants: maximum 5

Minimum age: 21

Levels: B1 Intermediate to C2 Advanced levels

Hours per week: 17 / 25

Course begins: every Monday

EXECUTIVE PLUS

- Combine small group lessons with 5 private lessons per week for additional support and guidance adapted to your rate of progress

SUPER EXECUTIVE

- 17 hour course plus 10 private lessons
- Combine small group lessons with 10 private lessons per week for additional support and guidance adapted to your rate of progress



BUSINESS ENGLISH CERTIFICATE (BEC) VANTAGE COURSE

The Business English Certificate will help achieve your ambitions to:

- Work abroad
- Work with international organisations in your own country
- Study business-related subjects taught in English
- Practice the English you need for business and to further your career. Gain the language skills and knowledge of US culture that will help you succeed in the English-speaking business world
- Improve your fluency and accuracy and learn the correct language used in an English-speaking workplace
- Practice skills such as: giving opinions, making recommendations, presenting different scenarios, solving problems, negotiating contracts, using the telephone in English and giving presentations
- Concentrate on the four skills of reading, writing, listening and speaking tested for in the Cambridge BEC test
- Prepare for a highly-regarded international qualification that shows employers your skills for using English in the workplace

Participants: maximum 8

Minimum age: 18

Level: B2 Upper Intermediate

Hours per week: 17

Course duration: 2 or 4 weeks

Course begins: set start dates

EXECUTIVE ENGLISH PRIVATE LESSON

- Focus on business related and personal goals to increase your English ability

English for Specific Purposes – TEACHING, LAW, FINANCE, MARKETING, HUMAN RESOURCES, AVIATION OR OIL AND GAS

2 OR 4 WEEKS



ENGLISH FOR SPECIFIC PURPOSES (ESP) MINI GROUP COURSE

- Law
- Finance
- Marketing
- Human Resources
- Aviation
- Oil & Gas

Participants: maximum 8

Minimum age: 21

Hours per week: 17

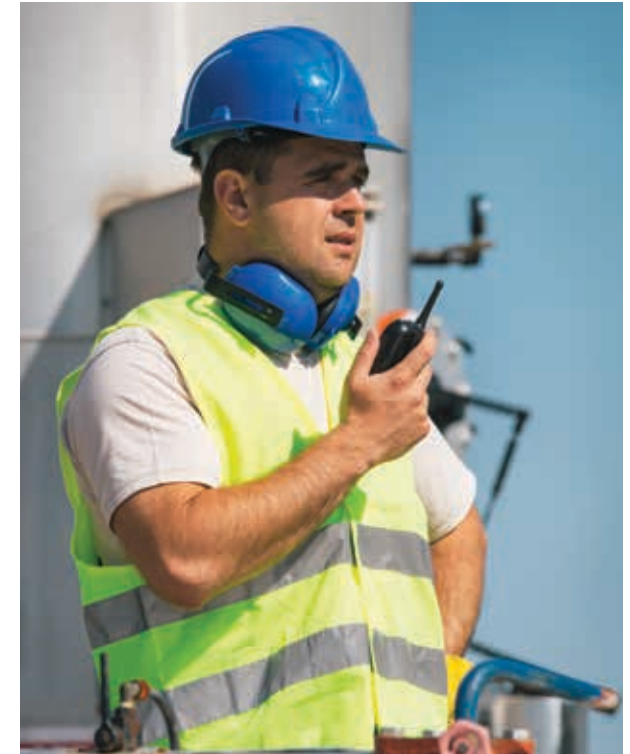
Courses begin: set start dates

ENGLISH FOR SPECIAL PURPOSES PRIVATE LESSON

- Concentrate on terminology and use of English related to Law, Finance, Marketing, Human Resources, Aviation or Oil and Gas

THE TEACHING KNOWLEDGE TEST (TKT) COURSE

- Review and discuss language and background to language learning and teaching
- Plan lessons
- Get introduced to up to date resources for language teaching
- Study and practice classroom management techniques
- Observe lessons
- Teach practice sessions
- Focus on learning effective tasks used by English language teachers
- Prepare for the Cambridge ESOL Teaching Knowledge Test



Accommodations

HOMESTAY

CHOOSE AN AMERICAN HOMESTAY IF YOU WANT TO:

- **Practice English!** Living with an American host requires you to practice your English outside of the classroom. A homestay provides a complete immersion into English and the American culture and you may see improvement in your conversation and listening skills.
- **Receive personal attention!** A homestay host will provide you with the advice you will need to make adjustments while living in the USA. Many hosts have traveled abroad and understand what it is like to live in another country.
- **Learn about American culture and traditions!** A homestay is a great way to meet Americans and learn about U.S. culture and traditions. Students who live with American hosts learn first hand about American holidays, traditions, foods, movies and music.
- **Have Internet Access and Cable TV!** Many homestays provide Internet access and Cable TV.
- **Share Mealtime!** The homestay family will provide you with some meals (depending on your meal plan) and access to laundry.

TLA CHOOSES

Caring, enthusiastic hosts and carefully select homes. We will provide an information sheet describing the host family at the time of booking.



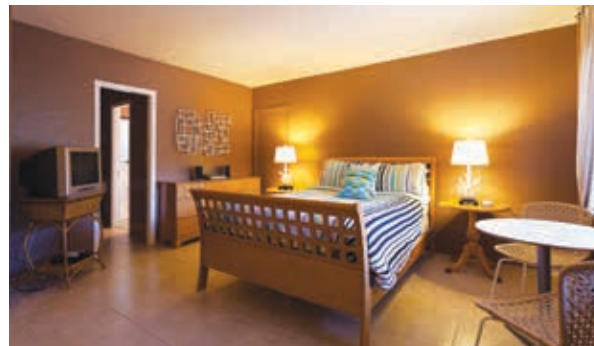
APARTMENTS

CHOOSE AN APARTMENT IF YOU WANT:

- An apartment that is comfortable and conveniently located at the beach or in the downtown area.
- The privacy of your own place
- A swimming pool
- Air conditioning
- Cable TV
- Bed linen and towels
- Kitchens that are fully equipped
- Rooms that have weekly cleaning, towels and linen
- Coin-operated laundry facilities available on the property
- Open-air BBQ grills
- Free parking

APARTMENT OPTIONS:

- **Studio:** One room, hotel-style, with private bathroom - without kitchen-microwave/fridge only
- **Efficiency:** A large room, approx. 30 sq. meters, with a large bed, kitchenette and bathroom
- **One-Bedroom:** A full apartment with living room, bedroom, full kitchen and bathroom



GUEST HOUSES

CHOOSE THIS BUDGET FRIENDLY ACCOMMODATION OPTION IF YOU WANT TO:

- Share your quarters with people from around the world
- Practice communication skills and English
- Live cooperatively, sharing chores and house duties
- Cook on your own or with your roommates



HOTEL ACCOMMODATION AVAILABLE





Group Programs

TLA WELCOMES YEAR ROUND GROUPS

We specialize in group arrangements and offer complete packages for:

- Families
- Teachers
- Engineers needing TOEIC
- Agricultural students
- Law enforcement professionals and military
- Pilots
- High school students
- Seniors
- Groups of students studying for a particular test
- Groups of people with a specific cultural interest

Packages can include:

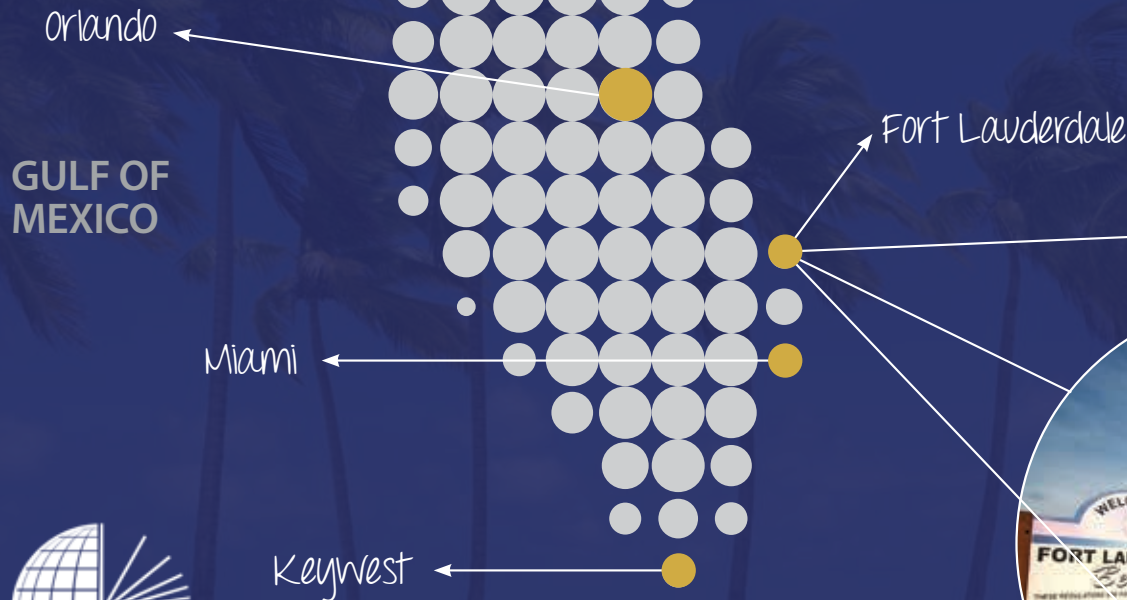
- ESP (English for Specific Purposes) or General English Lessons
- Meal plans
- Homestay or hotel accommodations
- Weekday activities to Ft Lauderdale beaches, River Cruise, The Everglades, Palm Beach, shopping malls, sporting events
- Weekend day trips to Orlando (DISNEYWORLD, UNIVERSAL STUDIOS, SEAWORLD), NASA Space center, Key West, Miami City Tour and Miami South Beach for Groups of 30 +
- Evening Activities such as movie nights, dance parties, pool parties, sports for groups of 30+





Our mission:

"We work together to create an inspiring, nurturing professional environment supported by excellent resources to deliver enriching and effective language training programs. Our programs are designed for people of all races, creeds and nationalities who wish to improve their communication skills and understanding of other cultures"



THE LANGUAGE ACADEMY

